

## ...Course locations



We can offer a variety of suites ranging from small syndicate rooms to large meeting and exhibition facilities. Our function rooms are modern, well equipped and offer picturesque views.

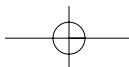
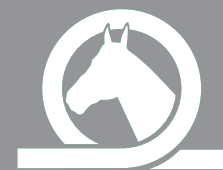
### Seating Capacities

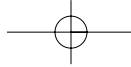
Suite Name	Floor Level	Theatre	Class Room	U Shape	Board Room	Cabaret	Banquet	Dinner / Dance
1 Vice Admiral Bar	1	48 x 2	36 x 2	40 x 2	120	140	120 x 2	210
2 Victory Bar	2	100	70	70	80	130	130	90
3 Trafalgar Restaurant	2	100	80	80	90	140	140	120
4 Horatio Suite	3	40	50	50	60	50	50	40
5 Vanguard Suite	3	15	15	20	15	20	18	N/A
6 Merton Suite	3	15	15	20	15	20	18	N/A
7 Hamilton Suite	3	15	15	20	15	20	18	N/A
8 Burnham Thorpe Suite	3	15	15	20	15	20	18	N/A
9 Copenhagen Suite	3	15	15	20	15	20	18	N/A
10 Hardy Suite	3	15	15	20	15	20	18	N/A
11 Paston Suite	3	15	15	20	15	20	18	N/A
12 St. George Suite	3	15	15	20	15	20	18	N/A
13 Grandstand & Paddock Bar 1	1	Ideal for use as a public bar for outdoor events						N/A
14 Grandstand & Paddock Bar 2	1	Ideal for use as a public bar for outdoor events						N/A
15 Grandstand Bar	1	Ideal for use as a public bar for outdoor events						N/A
16 Pavilion Marquee	1	Ideal for use as a public bar for outdoor events						N/A
17 Celebration Marquee	1	30	40	40	60	80	60	60
18 Winning Post Marquee	1	100	40 x 2	50 x 2	150	180	160	150
19 Breydon Suite	1	10	16	16	18	20	10	N/A
20 Yare Suite	1	18	20	20	24	30	26	N/A
21 Bure Suite	1	40	35	40	60	70	50	40
22 Haven Suite	1	10	16	16	18	20	10	N/A
23 Owners & Trainers Bar	1	Ideal for summer party hire						N/A

For further information, please contact our Commercial Team on 01493 842527.

Course locations

**GREAT YARMOUTH RACECOURSE**  
 Jellicoe Road, Great Yarmouth, Norfolk NR30 4AU  
 Telephone 01493 842527 Fax 01493 8432544 www.yarmouth-racecourse.co.uk

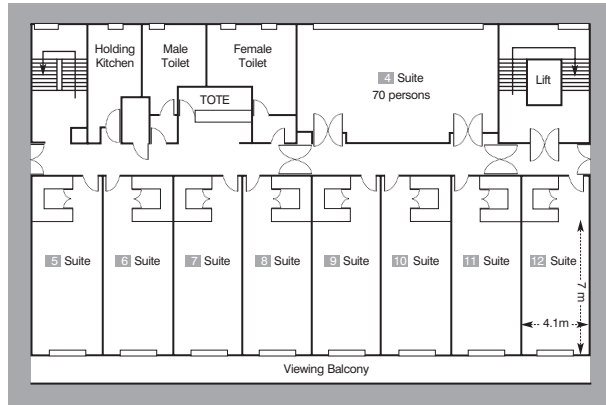




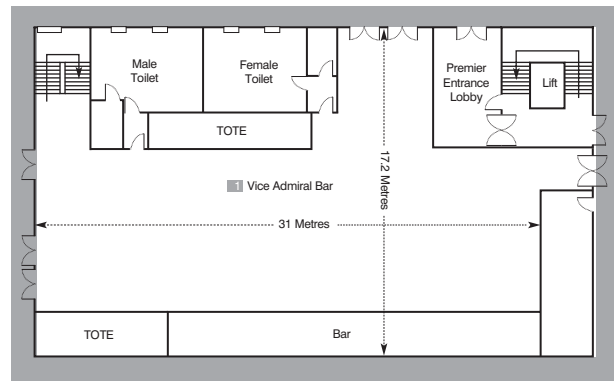
# Location Plan



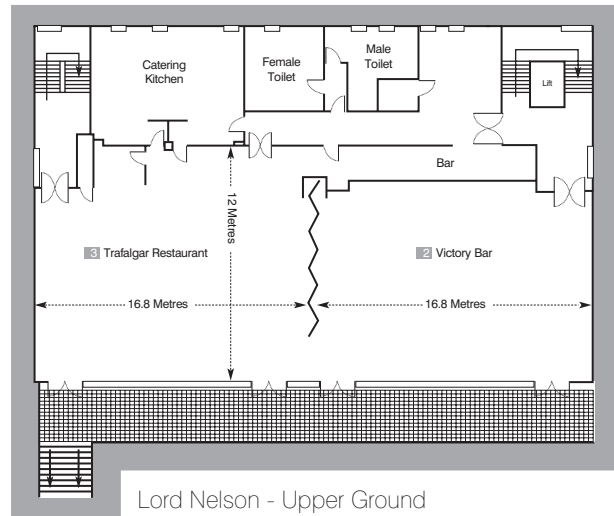
## The Lord Nelson Grandstand



Lord Nelson - First Floor



Lord Nelson - Lower Ground



Lord Nelson - Upper Ground

Course locations

### Technical Information

	Dimensions(m)				Access Doors(m)		Disabled Access	Lighting		13 Amp Sockets
	Length	Width	M <sup>2</sup>	Height	Width	Height		Natural	Blackout	
1 Vice Admiral Bar	31	9	279	2.7	1.65	2.04	✓	✓	✗	9
2 Victory Bar	16.8	12	174	2.7	1.65	2.04	✓	✓	✓	11
3 Trafalgar Restaurant	16.8	12.8	205	2.7	1.65	2.04	✓	✓	✓	11
4 Horatio Suite	10	7	70	2.4	0.82	2.04	✓	✓	✓	5
5 Vanguard Suite	7	4.1	28.7	2.4	0.82	2.04	✓	✓	✓	2
6 Merton Suite	7	4.1	28.7	2.4	0.82	2.04	✓	✓	✓	2
7 Hamilton Suite	7	4.1	28.7	2.4	0.82	2.04	✓	✓	✓	2
8 Burnham Thorpe Suite	7	4.1	28.7	2.4	0.82	2.04	✓	✓	✓	2
9 Copenhagen Suite	7	4.1	28.7	2.4	0.82	2.04	✓	✓	✓	2
10 Hardy Suite	7	4.1	28.7	2.4	0.82	2.04	✓	✓	✓	2
11 Paston Suite	7	4.1	28.7	2.4	0.82	2.04	✓	✓	✓	2
12 St. George Suite	7	4.1	28.7	2.4	0.82	2.04	✓	✓	✓	2

